

## Central base +

### Folding arm awning

Our best selling awning, a lovely streamlined fully cassetted awning with a distinctive grooved front rail.

The Central base + is a fully cassetted folding arm awning with stainless chain arms and end fix brackets. Maximum dimensions are 5m wide by 3.1m arm length.

Tel : 0121 345 1331 Mob : 07825 235545  
damion@centralawnings.co.uk  
www.centralawnings.co.uk

# Central base + Cassette folding arm awnings

As standard the aluminium profiles are powder coated in white (RAL 9010) and include an internal profile to support

the roller along its length, eliminating the need for individual roller supports. If preferred, the Base Plus can be finished

in brown as a free of charge optional extra and there is a choice of bronze, silver or steel finish cassettes. The arms

feature a durable chain link for extra strength.

The Base Plus is the last word in simplicity when it comes to installation and adjustment making it one of the best selling awnings today. The awning simply hooks onto two face or top fixed installation plates prior to being secured

## Wind resistance (at maximum dimensions)

Class tested by TÜV according to EN 13561:2004 2 (cm 500 x 260)

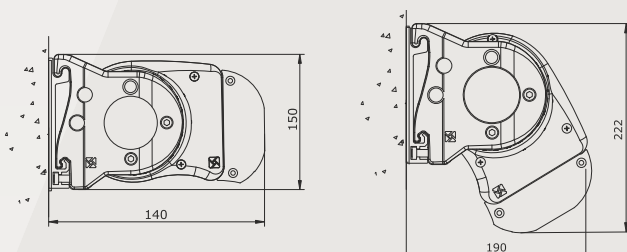
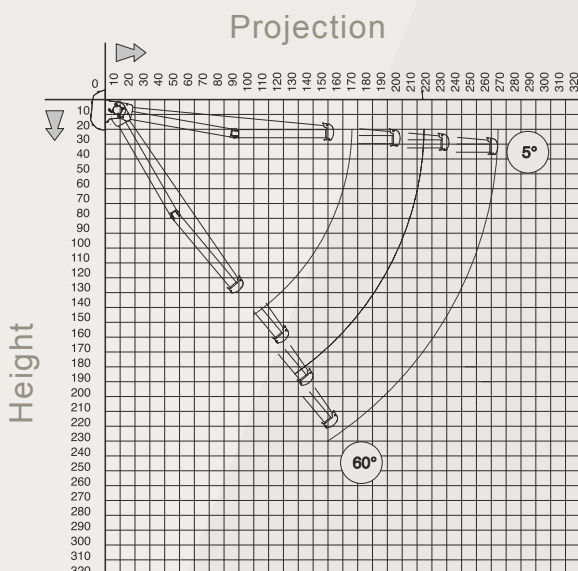
1 (cm 500 x 310)

## Overall dimensions and weight (1 pair of arms)

Width (cm)	500
Projection (awning open) (cm)	310
Approx. weight (kg)	65 - 70

PROJECT ION	MIN WIDTH
160	191
210	241
260	291

## Wall installation



## Ceiling

